

FAQ

WebLink Explorer FAQ

Here are answers to some of the most frequently-asked questions about WebLink Explorer. If you have a different question, please email us at support@weblinkexplorer.com. Also check out *What's New?* available on our web site, for a description of new features and enhancements added to Version 2.0, the latest release of WebLink Explorer.

General Questions

- [What is WebLink Explorer?](#)
- [Does WebLink Explorer replace my current browser?](#)
- [Where can I use WebLink Explorer? What web browsers do you support?](#)
- [Why should I use WebLink Explorer?](#)
- [How is WebLink Explorer different than my browser's favorites or bookmarks?](#)
- [What does WebLink Explorer cost?](#)
- [How can I find out when a new version of WebLink Explorer is available?](#)
- [How can I find out when a new version of WebLink Explorer is available?](#)
- [Are my WebLink Explorer bookmarks private?](#)

System Requirement and Installation

- [What are the requirements to run WebLink Explorer?](#)
- [Is WebLink Explorer secure?](#)
- [Does WebLink Explorer work with AOL?](#)
- [Is there a version of WebLink Explorer that runs with Netscape or other browsers?](#)
- [Does WebLink Explorer run on Macintosh or Linux?](#)
- [Is WebLink Explorer available in other languages?](#)
- [How can I uninstall or upgrade WebLink Explorer?](#)

Using WebLink Explorer

- [I've installed WebLink Explorer but I don't know how to start it. Now what do I do?](#)
- [How do I add new links to WebLink Explorer?](#)
- [Can I import my current browser's favorites or bookmarks?](#)
- [Where are WebLink Explorer links stored?](#)
- [Once I store links in WebLink Explorer, can I get them out again?](#)
- [How can I share WebLink Explorer bookmarks or use them on another computer?](#)

Issues and Problems

- [I'm having trouble installing WebLink Explorer on my computer. What should I do?](#)
- [Why doesn't the WebLink Explorer toolbar button appear on my Internet Explorer toolbar?](#)
- [How do I add or change the position of the WebLink Explorer toolbar button in my web browser?](#)
- [What if I have other problems running WebLink Explorer?](#)
- [How do I report problems?](#)

FAQ

General Questions

What is WebLink Explorer?

WebLink Explorer is a companion to Internet Explorer, providing a no-hassle way to discover, store, access, and retrieve web site links. You can view links simply by browsing your own set of categories, displayed in a hierarchical "tree" menu. If you can't remember where you stored a link, you can also just perform a search of your own personal collection, to quickly find a web site link again.

WebLink Explorer provides a unique and innovative category and web site display that you can easily customize, creating your own "personal portal" of web site categories and favorite web sites. With just one or two clicks of your mouse, you can access links in any category. If you want to rearrange or move links, you can simply and easily drag, move, or copy links between categories, so your favorite links are always where you want them.

On the technical side, WebLink Explorer is implemented as an ActiveX control, created with Visual Studio C++ to provide better performance and a more robust user interface than might typically be provided in HTML web pages. WebLink Explorer stores all information in an underlying relational database, providing inherent advantages of security, reliability, portability, and retrieval, over bookmarks stored in file-based systems.

[Back to top](#)

Does WebLink Explorer replace my current browser?

No, although that's kind of a trick question, because of its close integration with your web browser, you could use WebLink Explorer as the primary way you navigate the Internet. WebLink Explorer integrates an embedded Internet Explorer browser, so you can simply and quickly switch back and forth between Internet web pages and your own collections of web site links just by clicking a tab button. WebLink Explorer provides several other advantages over the Internet Explorer display, by making better use of screen real estate, providing more flexibility in capturing links, and making storing, organizing, and retrieving saved links easier.

There are two ways users can choose to use WebLink Explorer. First, since WebLink Explorer includes a web browser already embedded and accessible with a single tab click, you can choose to use the embedded WebLink Explorer browser whenever you access the Internet. That way, whenever you run across a link that you want to save or capture, you can simply drag it into a category in the Explorer tree or right-click with your mouse and choose the "Add Link to WebLink Explorer" context menu option. If you want to capture a number of links, all at the same time, you can click the Add Links button and select from a list of web page links on the displayed web page, and store them all at once in a new or existing category. (See the *Quick Start Guide* or online help for more information.)

WebLink Explorer was also designed so you can continue to use Internet Explorer, just the way you do now, and still take advantage of WebLink Explorer's capability to store and organize links. As you're browsing the web, if you find a web site link you'd like to capture, you can simply drag the web page address into the WebLink Explorer tree, and WebLink Explorer will capture the site. If you prefer, you can also store links in WebLink Explorer from your web browser, even if WebLink Explorer is not already open, using the same right-click context menu option "Add Link to WebLink Explorer." When you choose this option, WebLink Explorer displays a popup menu displaying a list a categories in

FAQ

which you can save links. After saving a link, focus returns to your original browser window, so you can continue on with what you were doing before. In addition you can continue to save links in IE favorites and then drag them from Internet Explorer's Favorites menu into WebLink Explorer, or using WebLink Explorer's Add Link button, you can import all or selected links from your Internet Explorer Favorites.

[Back to top](#)

Where can I use WebLink Explorer? What web browsers do you support?

WebLink Explorer currently works only on PCs running Windows 2000, Windows ME, or Windows XP, although we're investigating other platforms, such as Linux and Macintosh. (Memory management issues noted with Windows 98 may cause some problems running on that platform.)

WebLink Explorer currently also runs only with Internet Explorer, version 5.5 or later (IE 6 or later recommended), although future versions may also run with Netscape Navigator and other browsers that provide ActiveX support. (Nothing inherent in the design restricts WebLink Explorer from working as a bookmark or favorites manager for other browsers including Netscape Navigator and Opera.)

WebLink Explorer requires approximately 10-15 MB disk space to run (and approximately 10-25 MB additional temporary space during installation, depending on your specific computer's configuration). Due to basing the installation on Microsoft installer technology, which provides more reliable and resilient installation across different platforms, and which is also required for Windows certification, the downloadable installation program for WebLink Explorer, is around 18 MB.

[Back to top](#)

Why should I use WebLink Explorer?

We think that WebLink Explorer provides unparalleled ease-of-use and functionality to store and retrieve bookmarks or favorite web sites. Up until now, using most web browsers, it's easy to save a bookmark or favorite site, just not so easy to find it again. So, most people probably don't use bookmarks very much at all or as much as they would if they had a better method to retrieve links. It's often harder to find a bookmark you already saved, than it is to search for the site again on the Web. WebLink Explorer provides a very intuitive and natural way of storing and retrieving web site links, and returning back to favorite web sites.

Using WebLink Explorer's unique and innovative category and web site display, you can easily create and customize your own "personal portal" of web site categories and favorite web sites. You can view links simply by browsing your own set of categories, displayed in a hierarchical "tree" menu. So, with just one or two clicks of your mouse, you can access links in any category.

If you can't remember where you stored a link, you can also just perform a search of your own personal collection, to quickly find a web site link again. If you want to rearrange or move links, you can simply and easily drag, move, or copy links between categories, so your favorite links are always where you want them.

WebLink Explorer provides a number of other innovative features. Take a look at *What's New?* or the *Quick Start Guide* if you want all the information. Or, just download and install WebLink Explorer to check it out.

[Back to top](#)

FAQ

How is WebLink Explorer different than my browser's favorites or bookmarks?

In many ways. First, most conventional browsers store and retrieve bookmarks based on the user's own file system. WebLink Explorer stores all information, including category and favorite web site link information in a relational database, providing the advantages of improved security, reliability, portability, and flexibility of retrieval, searching, and sorting over bookmarks stored in file-based systems. As one example of the benefit to storing information in a database, we've included a starter collection of greater than 1000 "Best of the Web" sites in over 75 categories.

Second, WebLink Explorer's unique and innovative category tree and web site display makes the best use of the real estate of your screen and provides a completely configurable display of expandable folders and categories; allows you to navigate quickly to any link and add, delete or rearrange folders and categories based on the sites you use most often.

Third, WebLink Explorer provides more ways to save and organize new links. Using drag and drop, you can capture sites from any web site or your browser's Favorites list just by dragging into WebLink Explorer. Within WebLink Explorer, you can also select import and capture wizard options to add new links, move or copy links to new categories or move links to the top of your list.

WebLink Explorer provides other features like allowing you to easily personalize and add information about links, rank sites you visit and arrange links in whatever order you want. WebLink Explorer can also save extended web site URL information and automatically log into sites such as eBay or Amazon, stock trading and brokerage accounts and other personalized sites with a single click.

WebLink Explorer not only stores links to web pages on the Internet. You can also save and access links to documents in other formats such as Adobe Acrobat PDF or HTML stored on your computer. For example, you can save a link to a PDF documents and then access and open that document directly from WebLink Explorer.

Last, WebLink Explorer provides the ability to save your own favorite link categories as HTML web pages, to share or send to friends and colleagues. Other WebLink Explorer users can simply open the pages you send, select and import the category links, in a single operation. (See *What's New?* or the *Quick Start Guide* for more information on this feature, described as "Publish and Share.")

[Back to top](#)

What does WebLink Explorer cost?

For version 2.0, we're asking users to purchase WebLink Explorer for a nominal price. For the first 750 users, we're setting the price at \$8.95 (regular price of \$12.95); not much more really than lunch or the price of a movie. If you like the capabilities that WebLink Explorer provides, we're hoping you will help us to continue development of new features and enhancements by purchasing and registering the product. We've added a startup registration dialog in which you can enter a registration key you obtain by making your purchase. You can also obtain order information and purchase WebLink Explorer by clicking the Order Info button (taking you to RegNow.com, which provides secure payment options and issues registration keys for WebLink Explorer). You can continue to use the full features of WebLink Explorer without purchasing it, however, the registration dialog box (Nag screen) will continue to appear each time you start up the product.

[Back to top](#)

FAQ

What URL can I send to my friends so they can install and try WebLink Explorer?

WebLink Explorer is available from a number of popular software download web sites, but you can always obtain and download the WebLink Explorer software from our web site, www.weblinkexplorer.com. We also plan to publish WebLink Explorer updates on our web site, as we incorporate new features and enhancements, so you may want to check back on our site for the latest developments. In addition, we will hope to set up a Community area of the web site, where we will publish additional categories and links you can bring into your own favorite site collections.

[Back to top](#)

How can I find out when a new version of WebLink Explorer is available?

Check back on our web site. We have a number of new features and enhancements we are working on, so we plan to continue distributing updates on a regular basis. Plus, we'll be addressing any issues that users report, as well as implementing ideas for new features and enhancements based on users suggestions.

We are also in the process of setting up an email distribution list and signup form from our web site, so we can send out notification to users when new updates are available. In addition, we will be setting up a Community bulletin-board type forum, so users can exchange information, post questions, and talk to other users.

[Back to top](#)

Are my WebLink Explorer bookmarks private?

Completely. Not that we're paranoid, but why post your links on some public web server where companies have access to information about the sites you visit. Plus, we think bookmarks belong close to your web browser, where you have instant access, and they can be integrated with a more powerful user interface to customize, display, and access them. Plus, saving your links in a database close to your browser provides immediate access and the best performance in saving, organizing, and accessing your web site links. You won't get that kind of performance from an application, served up by web pages downloaded over the Internet.

Bookmarks in WebLink Explorer are also portable, so you can share your bookmarks between different computers. We also plan on adding options to WebLink Explorer where you can transparently access or synchronize links between different locations, similar to how PDAs synchronize and download email messages, contacts, and other information.

[Back to top](#)

FAQ

System Requirement and Installation

What are the requirements to run WebLink Explorer?

WebLink Explorer is designed to run with Microsoft Internet Explorer, version 5.5 or later (IE 6 or later recommended), on Windows 2000, Windows XP, and Windows ME. (Memory management issues noted with Windows 98 may cause some problems running on that platform.) WebLink Explorer requires about 10-15 MB permanent hard disk space (and approximately 10-25 MB additional temporary space during installation, depending on your specific computer's configuration). The following table provides a summary of system requirements for WebLink Explorer installation.

WebLink Explorer Installation Requirements

Platform/Software	System Requirement
<i>Computer & Operating System</i>	Windows 2000, Windows ME or Windows XP. (Memory management issues noted with Windows 98 may cause some problems running on that platform.) Disk Space: Minimum 10-15 MB free disk space (additional 10-25 MB required for temporary files used during installation, depending on your specific computer's configuration). Memory: 256 MB or higher recommended.
<i>Web Browser</i> [†]	Internet Explorer 5.5 or later (Internet Explorer 6 recommended) with Javascript enabled. Browser security settings: No changes required.

[†] Support for Netscape 7.0 and other browsers providing ActiveX support is planned for subsequent releases of WebLink Explorer.

[Back to top](#)

Is WebLink Explorer secure?

Yes, we believe it is. WebLink Explorer uses trusted ActiveX controls compiled in a Visual C++ application. No other information is downloaded from the Internet when you run WebLink Explorer and it does not require any connection to an external server to deliver content.

[Back to top](#)

Does WebLink Explorer work with AOL?

Yes, you can use WebLink Explorer, however, AOL's native browser does not allow making certain customization required to run WebLink Explorer. So, if AOL is your Internet Service Provider, you need to run WebLink Explorer from an Internet Explorer browser window separate from the browser that AOL provides. You can then start up Internet Explorer and run WebLink Explorer using any of the startup options described in the *Quick Start Guide* or the online help.

[Back to top](#)

FAQ

Is there a version of WebLink Explorer that runs with Netscape or other browsers?

Not currently, although we're first investigating options to run with other browsers on the PC platform. We will also look at the Linux and Macintosh platforms, to see if we can find ways to run on those computers as well.

[Back to top](#)

Does WebLink Explorer run on Macintosh or Linux?

Not currently. We will also look at the Linux and Macintosh platforms, to see if we can find ways to run on those computers as well. Although we haven't tested it, it may be possible to run WebLink Explorer using products such as Virtual PC on the Macintosh, which provide a virtual PC environment.

[Back to top](#)

Is WebLink Explorer available in other languages?

No. We will plan localization to other languages based on user requests and feedback from users. WebLink Explorer was developed in line with most practices required for localization, such as using development tools and libraries, resource files, Unicode character sets, etc., so the application can be localized.

[Back to top](#)

How can I uninstall or upgrade WebLink Explorer?

You can uninstall WebLink Explorer anytime, just by running the Installshield setup.exe program again, and choosing options to uninstall. You also can uninstall WebLink Explorer by choosing the Add/Remove Programs option from the Control Panel.

IMPORTANT: *BEFORE* uninstalling the previous version of WebLink Explorer, make a copy of the weblinkdb.mdb database (stored in the WebLink Explorer installation directory, for example, C:\Program Files\WebLink Explorer\db. That way you won't lose any categories and web site links you've stored, and can continue using your old database with new versions of WebLink Explorer.

Here are the steps to upgrade to a new version of WebLink Explorer:

- Uninstall the currently installed version of WebLink Explorer, for example, using the Add/Remove Programs option from the Control Panel.
- Install the new version of WebLink Explorer, Version 2.0. When you're finished, replace the new installed database file with your original database by copying the original weblinkdb.mdb file over the new database file.

NOTE: WebLink Explorer stores all your category and link information in a database, so it's good practice to periodically make a backup copy of the weblinkdb.mdb database file, in case you want to copy links to a different computer, you inadvertently delete links you wanted to keep, or have a problem with your computer.

[Back to top](#)

FAQ

Using WebLink Explorer

I've installed WebLink Explorer but I don't know how to start it. Now what do I do?

Following installation, you can start WebLink Explorer in any of the following ways:

- Select the *WebLink Explorer* menu option from the Windows Start Program or click the *WebLink Explorer* desktop icon.
- Click on the *WebLink Explorer* toolbar button provided on the Internet Explorer toolbar. If the WebLink Explorer (WLE) button does not automatically appear on your Internet Explorer browser's toolbar, you can easily add it. To do that, open Internet Explorer's View menu and select the *Toolbars | Customize* option.
- Select the *WebLink Explorer* menu option from Internet Explorer's Tools menu.
- While displaying a web page in Internet Explorer, right-click anywhere on the web page or on a specific link to display Internet Explorer's context menu; then select "*Add Link to WebLink Explorer*" to add the link to an existing WebLink Explorer folder or category.

The WebLink Explorer desktop icon and Windows Start Programs menu options start WebLink Explorer in full-screen (expanded) mode. Starting WebLink Explorer using Internet Explorer Tools menu, toolbar and context menu options displays the WebLink Explorer tree that you can expand to the full-screen display or collapse again, by clicking WebLink Explorer's Show|Hide buttons.

[Back to top](#)

How do I add new links to WebLink Explorer?

As with other features, WebLink Explorer provides a number of different ways to let you save links. So you can choose whatever method best suits your personal preference and browsing style.

Here's a summary of the different ways in which you can add links to WebLink Explorer.

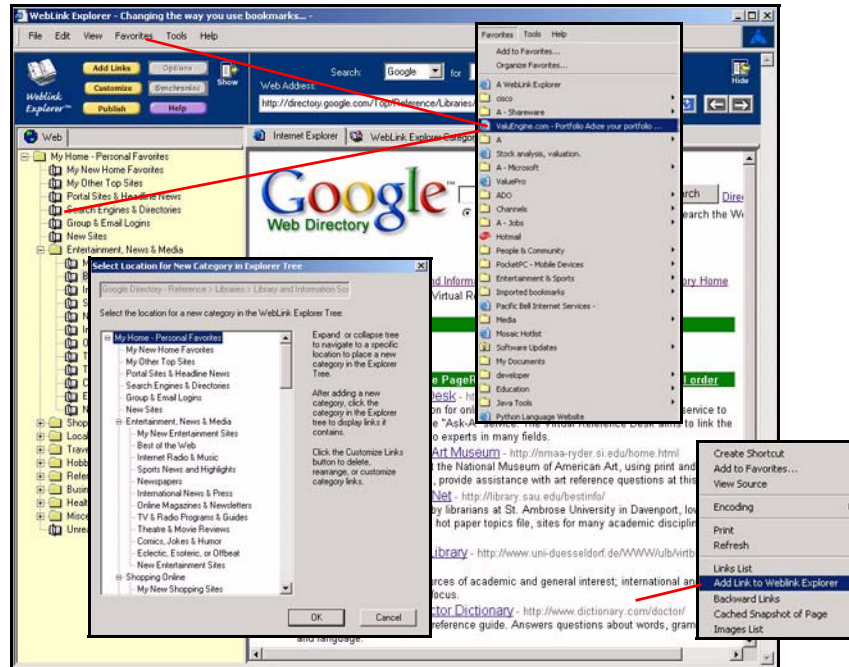
- Drag links from a web page to a WebLink Explorer folder or category. You can capture links from WebLink Explorer's embedded Internet Explorer browser window, or from an external web browser window.
- Open Internet Explorer's Favorites menu and drag links directly into a WebLink Explorer folder or category.
- Right-click on a link you want to capture or anywhere else on the page, to open Internet Explorer's web page context menu; then select the "*Add Link to WebLink Explorer*" option. WebLink Explorer displays a popup Explorer Tree dialog to let you choose the category where you want to add a web page link.

The following illustration highlights some of these methods that you can use to capture links.

FAQ

CAPTURING LINKS IN WEBLINK EXPLORER

Choose Captured Links option to select and add one or more links from web page to new or existing category or folder.



- Click the Add Links button. From the Add or Import Links dialog box, you can capture the web address of web pages displayed in WebLink Explorer's embedded browser by selecting the "Add web site address to existing WebLink Explorer Category". To add multiple links that are contained within the displayed web site page, select from one of the other two options to "Add Links..." to either a New or Existing Category or Folder. Capturing multiple links is particularly useful, if the web page you're displaying in WebLink Explorer already contains a well-organized collection of links, such as the results of a Google search, from Yahoo.com, DMOZ.org or Google's directory listing web pages.

You can also use the Add Links option to import or capture links from published category web pages that you may have received from other WebLink Explorer Users. See *What's New?* or the *Quick Start Guide* for more information on this feature, described as "Publish and Share."

[Back to top](#)

Can I import my current browser's favorites or bookmarks?

Yes. To import your web browser's favorites, click the Add Links button and select Import Favorites. WebLink Explorer then displays a list of all your web browser's saved favorites, from which you can choose to import all links, or selected individual folders and favorites to import into WebLink Explorer.

[Back to top](#)

FAQ

Where are WebLink Explorer links stored?

Internet Explorer stores bookmarks based on folders and files stored locally on your PC. WebLink Explorer is different in that all category, bookmark or favorite information is stored in a relational database. Using a database provides numerous advantages, including increased reliability, and portability. In addition, WebLink Explorer benefits from using a database, in being able to flexibly control the way information is retrieved and displayed. For example, WebLink Explorer allows users to search for links based on information stored in specific fields in the database. You can also specify preferences for the way information is displayed, for example, choosing formats of the display and other attributes.

[Back to top](#)

Once I store links in WebLink Explorer, can I get them out again?

Yes. Publish features designed into the product allow you to navigate and select categories to publish. WebLink Explorer then retrieves information from its database and exports all the link information for selected categories as an HTML file that you can import back into your web browser, or distribute to friends or colleagues. If those users also have WebLink Explorer installed, they can import, in a single operation, all the categories and links contained in the published HTML file.

[Back to top](#)

How can I share WebLink Explorer bookmarks or use them on another computer?

There are a few different ways to share or distribute links stored in WebLink Explorer. First, you can transport the WebLink Explorer database directly to different computers where WebLink Explorer is installed. Second, WebLink Explorer's new Publish feature lets you create, select, and then publish your own personal categories and links as HTML web pages that you can then send or distribute to your friends or colleagues. Those users, if they're also using WebLink Explorer, can import the entire set of published links in a single operation. And even if they're not using WebLink Explorer, they can access the links simply by opening the published web page in a browser.

When users import links from a published category web page, not only does WebLink Explorer save the selected hyperlinks from the published web page, but it also captures and stores the description entered for each link, so the category links are transferred exactly as they were saved. See *What's New?*, the *Quick Start Guide*, or online help for more information on using the Publish and Share feature and importing links from published category web pages.

[Back to top](#)

FAQ

Issues and Problems

I'm having trouble installing WebLink Explorer on my computer. What should I do?

When the InstallShield setup.exe program finishes installation, you should received a confirmation message, indicating WebLink Explorer was installed correctly. Following WebLink Explorer installation, you can verify that the application was installed by checking for the WebLink Explorer option in programs available from the Windows Start Programs menu. A WebLink Explorer shortcut icon should also appear on your desktop. In addition, when you launch Internet Explorer, you should be able to see the WebLink Explorer toolbar icon on the Internet Explorer toolbar. (In addition, a WebLink Explorer menu option is installed in the Tools menu.)

The first time you start up WebLink Explorer, it may take a few seconds while it loads the information it needs to run. WebLink Explorer first displays an Internet Explorer browser window frame (full-screen or Explorer Tree only, depending on which option you selected to start). Then, it fills the browser window with the WebLink Explorer application, the Explorer Tree appearing on the left, and the category links display on the right side.

So, regarding troubleshooting, If everything appears to be installed correctly, but the WebLink Explorer doesn't start up, probably the first thing to check is to make sure you have Internet Explorer 5.5 or later. (Using Internet 6.0 or higher is recommended.) The second thing is verifying that an ODBC system data source named "weblinkdb" is set up, which provides access to the WebLink Explorer database.

NOTE: Javascript must be also enabled to run WebLink Explorer.

Launching WebLink Explorer uses some Javascript commands not supported by earlier versions, so that could cause a problem. You might also try starting WebLink Explorer another way, for example, if clicking the WebLink Explorer icon on the Internet Explorer toolbar doesn't work, try the Windows Start Program menu option or the WebLink Explorer shortcut on the desktop.

If you are still not able to get WebLink Explorer to work, please contact us, so we can help. For installation issues or other problems with WebLink Explorer, send us an email, including a description of your problem and your PC setup, to support@weblinkexplorer.com.

[Back to top](#)

Why doesn't the WebLink Explorer toolbar button appear on my Internet Explorer toolbar?

If the WebLink Explorer (WLE) button does not automatically appear on your Internet Explorer browser's toolbar, you can easily add it. To do that, open Internet Explorer's View menu and select the *Toolbars | Customize* option. From there you can add the WebLink Explorer toolbar button from available toolbar buttons to the current toolbar and also select size of displayed icons.

[Back to top](#)

FAQ

Clicking the WebLink Explorer toolbar button in Internet Explorer doesn't work.

If WebLink Explorer doesn't start up when you click the toolbar button, first make sure you have Internet Explorer 5.5 or later installed on your computer. (Using Internet 6.0 or higher is recommended.) Launching WebLink Explorer uses some Javascript commands not supported by earlier versions, so that is likely the cause. You might also try starting WebLink Explorer another way, for example, selecting the WebLink Explorer option from the Windows Start Program menu or double-clicking the WebLink Explorer shortcut on the desktop.

To check the version number of your Internet Explorer browser, select "About Internet Explorer" from Internet Explorer's Help menu. Internet Explorer displays the version number as the first item in the dialog.

NOTE: Javascript must be also enabled to run WebLink Explorer.

If you're running the correct version of Internet Explorer and are still not able to get WebLink Explorer to work, please contact us, so we can help. Send us an email, including a description of the problem and your PC setup, to support@weblinkexplorer.com.

[Back to top](#)

How do I add or change the position of the WebLink Explorer toolbar button in my web browser?

You can also rearrange the order and size of icons displayed on Internet Explorer's toolbar by choosing options from Internet Explorer's View menu. Open the View menu and select the *Toolbars | Customize* option. From there you can select the WebLink Explorer from the list of current toolbar buttons, and move the toolbar button up or down in display order.

[Back to top](#)

What if I have other problems running WebLink Explorer?

There are some known problems and issues we already know about. For a list of these problems and workarounds you can use to get around them, see the Release Notes posted on our home page. While we hope that the problems are a minor inconvenience, nonetheless, we realize how important it is that the product work well and as you expect it to. So, we hope that you'll be patient as we address any issues we currently know about, as well as other problems that you report to us. And keep checking back on our web site for updates.

[Back to top](#)

How do I report problems?

If you encounter a problem, you may want to first check the release notes to see if it's a problem or issue we're already aware of, and are working to address. If you find a new problem, please tell us about it, sending email to support@weblinkexplorer.com. When doing so, it would be helpful if you would include as much information as possible to reproduce the problem, and include information about your specific PC hardware and software configuration.

[Back to top](#)