

What's New?

WebLink Explorer, Version 2.0

This document describes changes made in Version 2.0 of WebLink Explorer. Although we've made a significant number of changes and improvements we think you'll like, we also know there are more features users have requested or know we want to add in future releases of the product. If you have suggestions for new features and enhancements, please share them with us and send an email to:

pandora@weblinkexplorer.com

Also, if you like the capabilities that WebLink Explorer gives you, please help us to continue development of new features and enhancements by purchasing and registering the product.

New Features and Enhancements

This section describes the more significant new features and enhancements added to this release of WebLink Explorer.

Publish and Share Feature

The most significant new feature added to Version 2.0 of WebLink Explorer is the "Publish and Share" feature. One of the original primary motivations for creating the WebLink Explorer application was to make it easier for users to share their own collections of personal best web sites with friends, colleagues, or other users.

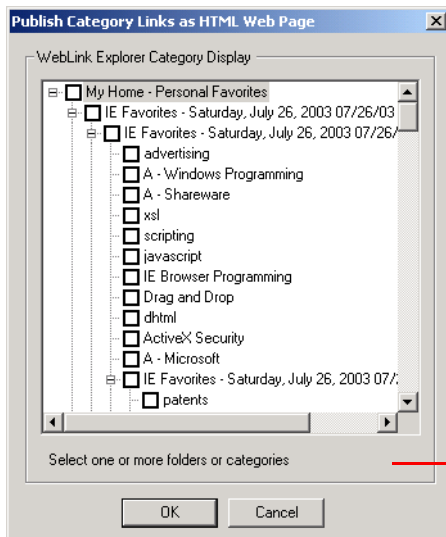
While search engines, portal, and directory listing sites have their place, it's unlikely they'll ever substitute for an individual's own research, expertise, and taste, or go beyond the least common denominator and provide expertise or specialized knowledge of web sites for more specific and esoteric subjects and categories. So, it is with that in mind, that WebLink Explorer provides an extremely easy-to-use capability for users to collect, organize, and share their own web link collections.

WebLink Explorer's new Publish feature lets you create, select, and then publish your own personal categories and links as regular HTML web pages that you can then send or distribute to your friends or colleagues. Those users, if they're also using WebLink Explorer, can import the entire set of published links in a single operation. And even if they're not using WebLink Explorer, they can access the links simply by opening the published web page in a browser.

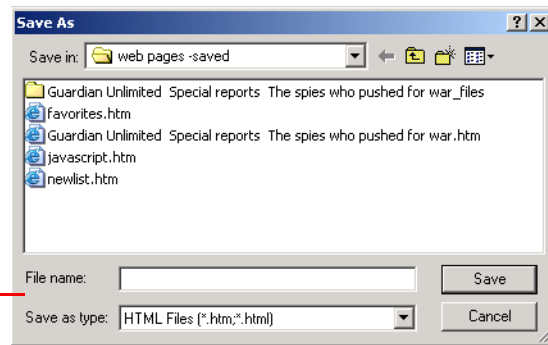
To choose to publish WebLink Explorer categories and links, you simply click the **Publish** button. WebLink Explorer then displays a dialog in which you can select one more categories from your WebLink Explorer category link collection. After selecting categories you want to publish, WebLink Explorer prompts you to specify the name and location of an HTML file to save the category links. When you click OK, WebLink Explorer goes ahead and creates the published web page in the location you specified.


What's New?

PUBLISHING WEBLINK EXPLORER CATEGORY LINKS

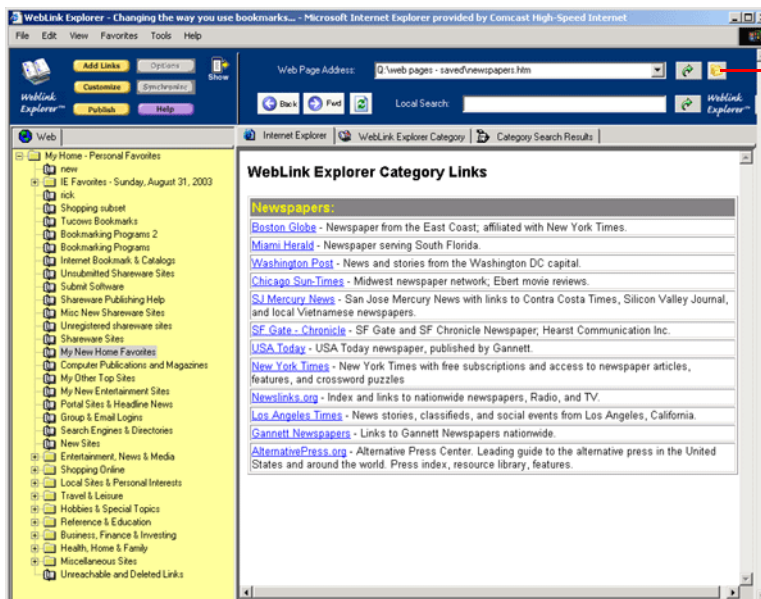


Select check boxes next to one or more WebLink Explorer categories. WebLink Explorer creates an HTML page that contains the web links and descriptions of sites in all selected categories. You can email the HTML file with published links to friends and colleagues. Other WebLink Explorer users can easily import and recapture the links in their own personal WebLink Explorer link collections.



After publishing category links to an HTML file, you can then email or distribute the file to other users. If those users also have installed WebLink Explorer, they can first open the published HTML web page in WebLink Explorer's embedded browser window (open and navigate to the published link web page by clicking the Browse  button). Here is a typical display of the links saved in a published category web page.

DISPLAY OF A PUBLISHED CATEGORY WEB PAGE IN WEBLINK EXPLORER



Click the Browse button to navigate to the location of a saved HTML web page.

WebLink Explorer displays the published links web page in the Internet Explorer web tab window.

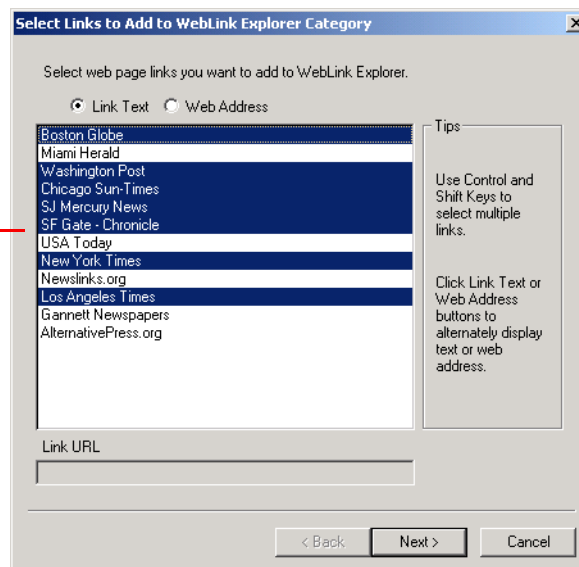
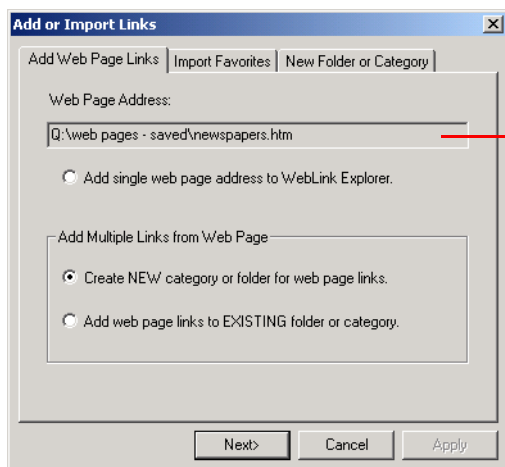
To import or capture links contained in the published web page, click the Add Links button.

What's New?

To import or capture selected links into their own web link collection, you simply click the Add Links button, then choose whether to add links into a new or existing category and select the links you want to import.

IMPORTING LINKS FROM A PUBLISHED CATEGORY WEB PAGE

Choose where you want to import captured links. WebLink Explorer then displays a list of links the published web page contains. Select the links you want to add to a new or existing category.



Next, WebLink Explorer prompts you to specify the location in the WebLink Explorer tree where you want to store the category containing captured links. When you click Finish, WebLink Explorer captures the links and saves them in the new or existing category you specified.

NOTE: Not only does WebLink Explorer save the selected hyperlinks from the published web page, but it also captures and stores the description entered for each link, so the category links are transferred exactly as they were saved.

So, we think this is a very powerful feature, that makes it extremely easy to share information with people having similar interests and very quickly build up a repository of web links in topics you're most interested in. All, with just a few clicks of your mouse. And this capability opens up numerous community and commercial opportunities for category link distribution, or at the very least, make it easier for you to share. all your favorite sites with friends.

What's New?

Searching for and Displaying Stored Links

Even with the best of systems for categorizing and organizing links, there will be times when you simply just can't find the information or web page link you know you've stored someplace, but just can't remember where. Not a problem. In WebLink Explorer, you can simply enter part or all a word that can help to identify a previously stored link. We first introduced this feature in Version 1.2.1, but in this release, Version 2.0, have enhanced the functionality so that WebLink Explorer now displays the category in which the links you searched for, are actually stored, in addition to letting you click directly on the links in the search results display, to go to the corresponding web site.

To search for links you've already saved in WebLink Explorer categories:

1. Enter any text you want to search for in the Local Search field.

NOTE: WebLink Explorer searches the web address URL, link label text, or short description field of the saved links in all WebLink Explorer categories to return results.

2. Click the **Go** button next to the Local Search field to initiate the search.

WebLink Explorer returns the results of your search, displaying matching links on the Category Search Results tab.

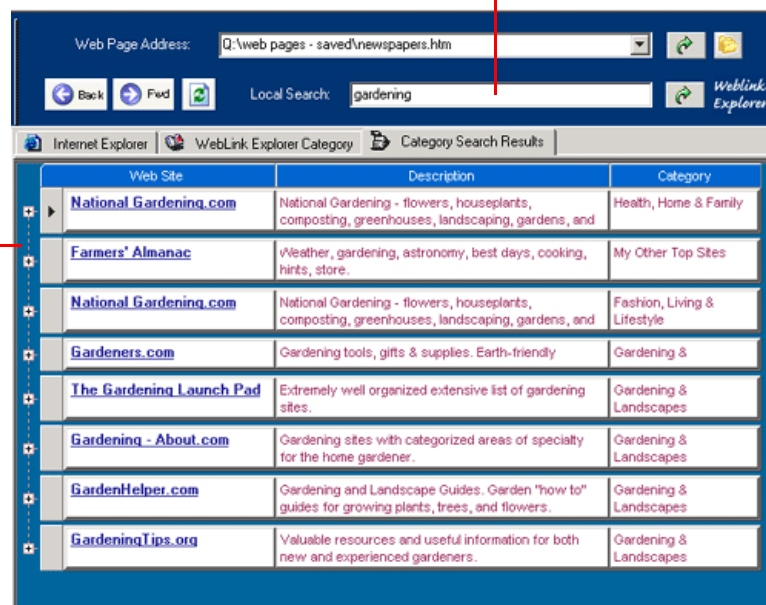
SEARCHING FOR STORED LINKS

Enter search text to match text in web site URL, hyperlink label text, or short Description fields. Click the Go button or press Enter to perform the search and return matching saved links from WebLink Explorer categories.

WebLink Explorer Search Results

Saved links matching search are displayed on Category Search Results tab.

Click on a link to go the corresponding web site.



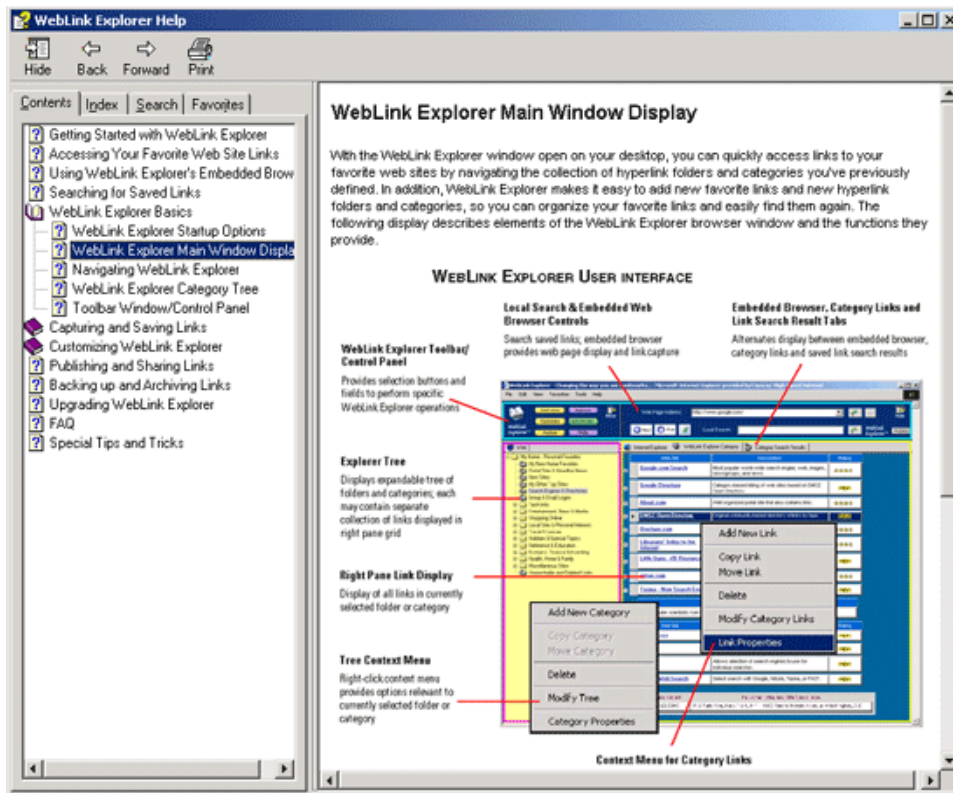
What's New?

To perform a new search, simply enter a new search string in the Local Search field. You can also click on the Internet Explorer or WebLink Explorer Category tabs to display a specific web site page or return to a display of links for a selected category.

QuickStart and Online Help

While WebLink Explorer's display and user interface is pretty intuitive and simple to use, once you become familiar with it, it also provides a lot of functionality. There are also a lot of different ways to perform the same operations, so you can pick and choose between the various methods that most suit your particular preference and way you use the Internet. To help you take advantage of all its features, the WebLink Explorer Online Help provides topics and illustrations detailing all of the operations you can perform. You can access online help at any time just by clicking the **Help** button.

WEBLINK EXPLORER ONLINE HELP

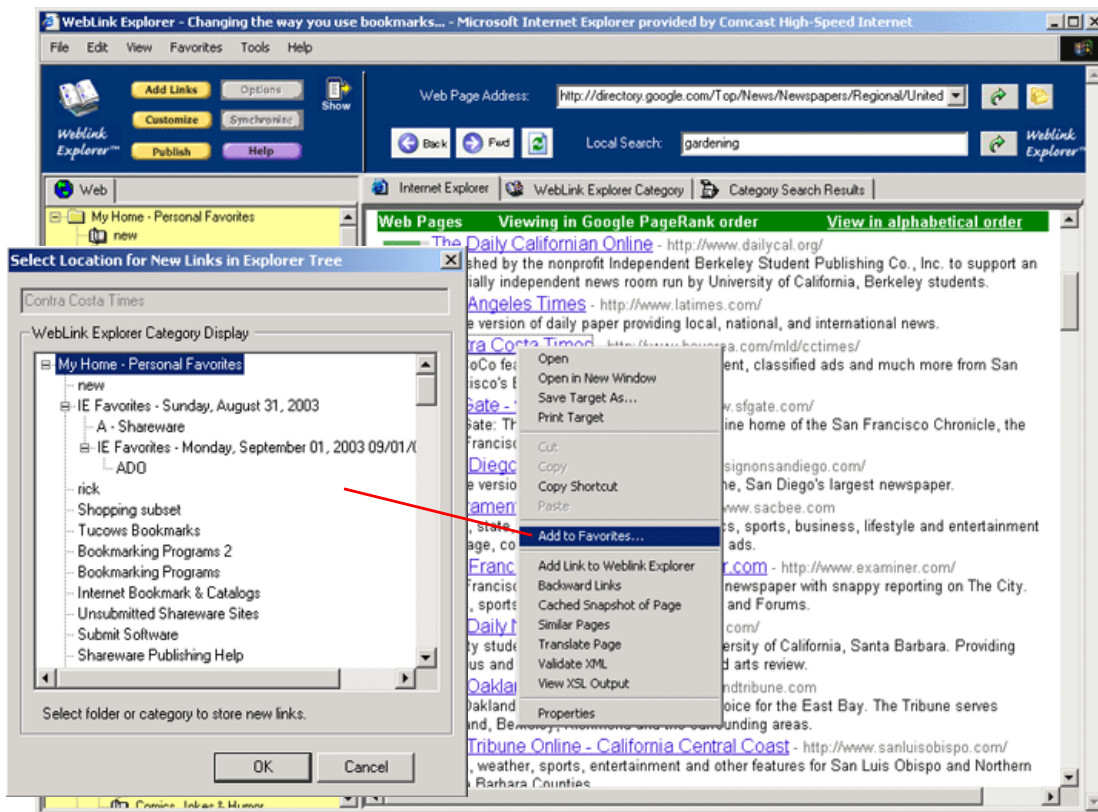


What's New?

Improved Integration with your Web Browser

There are two ways users can choose to use Weblink Explorer. First, since Weblink Explorer includes a web browser already embedded and accessible with a single tab click, you can choose to use the embedded Weblink Explorer browser whenever you access the Internet. That way, whenever, you run across a link that you want to save or capture, you can simply drag it into a category in the Explorer tree or right-click with your mouse and choose the "Add Link to Weblink Explorer" context menu option.

SAVING LINKS FROM YOUR WEB BROWSER



If you want to capture a number of links, all at the same time, you can click the Add Links button and select from a list of web page links on the displayed web page, and store them all at once in a new or existing category. (See the *Quick Start Guide* or the online help for more information.)

If you prefer, you can also store links in Weblink Explorer from your web browser, even if Weblink Explorer is not already open, is in the background, or minimized using the same right-click context menu option "Add Link to Weblink Explorer." When you choose this option, Weblink Explorer displays a popup menu displaying a list a categories in which you can save links. After saving a link, focus returns to your original browser window, so you can continue on with what you were doing before.

What's New?

Minor Feature Enhancements and Bug Fixes

This section describes smaller feature enhancements and fixes added to this release of WebLink Explorer.

- Launching WebLink Explorer multiple times from the toolbar or right-click context menu “Add Link to WebLink Explorer” option now correctly reuses already open WebLink Explorer window.
- Entering Web Page Addresses and Local Collection Search Strings — The Enter or Return key now automatically complete entries in Web Page Address and Local Search fields and displays the corresponding web page or search results based on where the cursor is positioned (so you no longer need to click the Go button).
- Automatic Tab Switching — Entering a web page, a link search, or clicking a node in the Explorer tree now correctly refreshes and updates the display based on the correct context.
- Deleting Folders or Categories — Deleting folders from Explorer tree now safeguards against deleting a folder that may still contain subcategories or subfolders. Users are prompted to first move those sub categories and subfolders to another location, then delete the folder or category.
- Importing links from a published web page using the Add Links button now captures link descriptions in addition to basic hypertext URL and link label information.
- Added default completion of dialog boxes such as “Add New Category” so pressing Enter or Return key completes operation rather than requiring you to click OK button.