



WebLink Explorer Data Sheet

Product description

WebLink Explorer is a companion application to Internet Explorer, providing a no-hassle way to discover, store, access, and retrieve web site links. You can view links simply by browsing your own set of categories, displayed in a hierarchical "tree" menu. If you can't remember where you stored a link, you can also just perform a search of your own personal collection, to quickly find a web site link again.

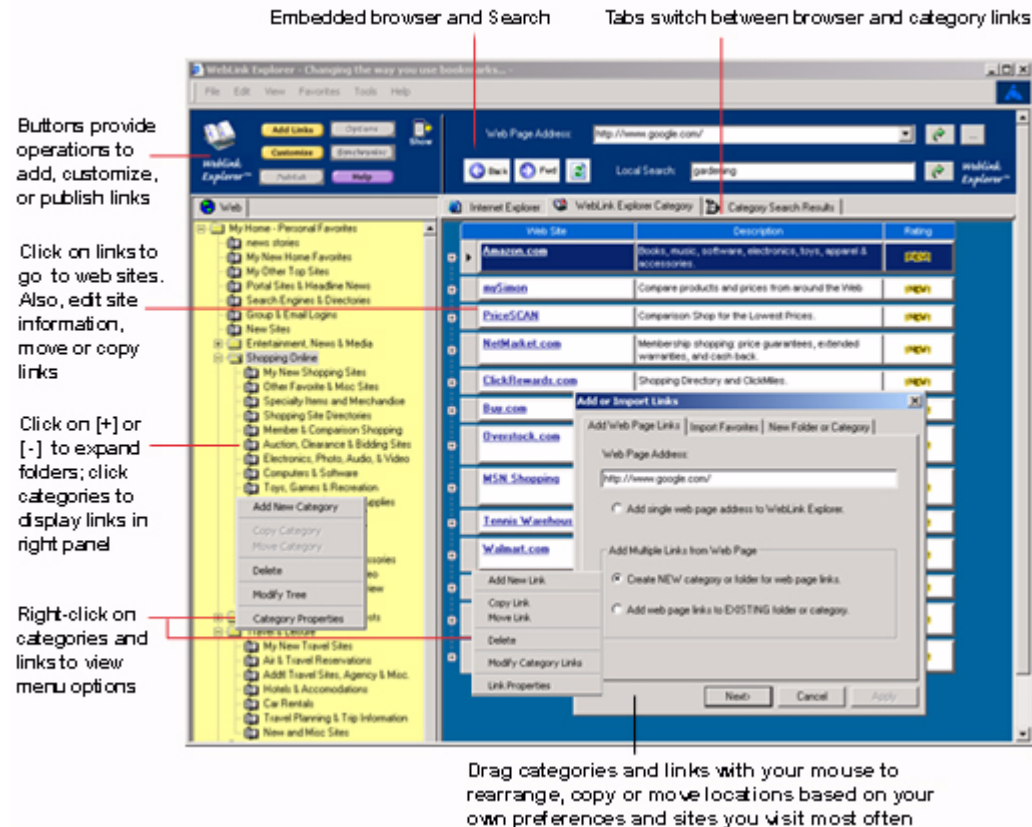
New features and benefits

WebLink Explorer provides a unique and innovative category and web site display that you can easily customize, creating your own "personal portal" of web site categories and favorite web sites. With just one or two clicks of your mouse, you can access links in any category. If you want to rearrange or move links, you can simply and easily drag, move, or copy links between categories, so your favorite links are always where you want them. WebLink Explorer provides a number of other innovative features:

- **Customizable Category Tree.** — Completely configurable display of expandable folders and categories; allows you to navigate quickly to any link. Add, delete or rearrange folders and categories based on the sites you use most often.
- **Store Additional Category and Link Information.** — Add personal notes about links, rank sites you visit and arrange links in whatever order you want. WebLink Explorer also saves extended Link URL information to automatically log into sites.
- **Drag and Drop Anywhere.** — Capture new links from any web site or your browser's Favorites list just by dragging into WebLink Explorer. Within WebLink Explorer, add new links, move or copy links to new categories or move links to the top of your list.
- **Discovery and Capture.** — Embedded browser lets you search web sites and view web pages such as Yahoo and Google; then select and capture one or more links in a single step. You can also import links from your own web browser's Favorites list, one at a time or all at once.
- **Publish and Share.** — Save your own favorite link categories as HTML web pages, to share or send to friends and colleagues. Other WebLink Explorer users can simply open the pages you send, select and import the category links, in a single operation.
- **Flexible Startup and Web Browser Integration.** — Use WebLink Explorer as your primary browser or choose integrated Toolbar or Context menu options to open WebLink Explorer only whenever you want to save or access links in WebLink Explorer.
- **Link to Other Documents on your Desktop.** — WebLink Explorer not only stores links to web pages on the Internet, you can also store and access links to documents in other formats such as Adobe Acrobat PDF, Microsoft Word, etc.
- **Starter Collection of Favorite Sites.** — We've scoured the web and provided a starter collection of over 1000 "Best of the Web" sites in over 75 categories. Choose the ones you want to keep and delete the rest. You can add your own links, customize and reorganize categories just the way you like them, so you'll have your own "Personal Portal" web collection in no time.

Product Overview

WebLink Explorer's unique user interface makes storing and managing links to web sites easier than ever before. It gets rid of the clutter in your current favorites listing by providing a customizable category tree that groups links by the topics or categories you choose to define. You can navigate your saved links simply by browsing through your own collection of hyperlink folders and categories. In the right pane window, WebLink Explorer displays all the links for the currently selected folder or category.



With the WebLink Explorer window open on your desktop, you can quickly access links to your favorite web sites by navigating the collection of hyperlink folders and categories you've previously defined. In addition, WebLink Explorer makes it easy to add new favorite links and new hyperlink folders and categories, so you can organize your favorite links and easily find them again.

WebLink Explorer has many more features you'll want to check out. For more information, download the Quick Start Guide to get a closer look.

Target markets

WebLink Explorer was designed primarily for end users, small business, and targeted vertical markets.

Requirements

Requires Internet Explorer 5.5 or later (IE 6 recommended) on Windows 2000 and XP computers. Later versions may also be made available for other browsers and computer platforms.